

Section Seven
The Woods of Gleannloch Farms
Supplement to Residential Design Guidelines

In addition to the Residential Design Guidelines for Gleannloch Farms, these are "Village" specific requirements.

Typical lot sizes in The Lake Estates are 75' x 120' and 80' x 125'.

This village is mostly wooded, with a naturalistic feel. Diligent site planning is expected to take advantage of the trees and to preserve as much of the wooded character as possible.

Specifics for fencing and driveway location are noted in the following pages.

FOREWORD

Gleannloch Farms is being developed as a master planned residential community. This document is presented as a minimum set of development guidelines and standards for Gleannloch Farms Section Seven - The Woods. The intended use is to provide an understanding of responsibilities of the Developer and the Builder, to develop a framework to illustrate and define design objectives and requirements to create a unified, harmonious setting for divergent lifestyles and tastes inherent in a planned development.

These guidelines are supplemental to The Declaration of Covenants, Conditions and Restrictions, and are to be used by the Architectural Review Committee (ARC) in review of plans submitted, as required by builders. Non-compliance with these guidelines is grounds for disapproval of plans. These guidelines are also for use as a standard for future compliance to maintain the integrity of the community.

Illustrative examples and descriptions are meant to insure an orderly, well-maintained sense of an attractive environment for the residents of Gleannloch Farms.

Gleannloch Farms is located in Northwest Harris County, Texas in the extra-territorial jurisdiction of the City of Houston. Rules and regulations of these entities supercede the residential guidelines.

SITE LAYOUT

Residential Driveway/Garage Placement for Section Seven - The Woods of Glannloch Farms

The following is a list by lot and block number dictating location of residential driveways and garages. Locations of driveways and garages have been determined for reasons of aesthetics, vehicular circulation and safety.

The designation of left, right or optional is determined by viewing the lot from the street right-of-way facing the lot. Side lot loading is not permitted. A variance request, in writing, may be considered for certain lots having frontage on two sides if the garage is set back from the right-of-way twenty feet (20').

Left Side: *Block 1* - lots 12, 17, 32
Block 2 - lots 22, 47
Block 3 - lot 1
Block 4 - lots 1, 9, 15

Right Side: *Block 1* - lots 1, 13, 33, 42, 48
Block 2 - lot 23
Block 4 - lot 8

Optional: *Block 1* - lots 2, 3, 4, 5, 6, 7, 8, 9, 10, 11, 14, 15, 16, 18, 19, 20, 21, 22, 23, 24, 25, 26, 27, 28, 29, 30, 31, 34, 35, 36, 37, 38, 39, 40, 41, 43, 44, 45, 46, 47, 49, 50
Block 2 - lots 1, 2, 3, 4, 5, 6, 7, 8, 9, 10, 11, 12, 13, 14, 15, 16, 17, 18, 19, 20, 21, 22, 23, 24, 25, 26, 27, 28, 29, 30, 31, 32, 33, 34, 35, 36, 37, 38, 39, 40, 41, 42, 43, 44, 45, 46, 47, 48, 49, 50
Block 3 - lots 1, 2, 3, 4, 5, 6, 7, 8, 9, 10, 11, 12, 13, 14, 15, 16, 17, 18, 19, 20, 21, 22, 23, 24, 25, 26, 27, 28, 29, 30, 31, 32, 33, 34, 35, 36, 37, 38, 39, 40, 41, 42, 43, 44, 45, 46, 47, 48, 49, 50
Block 4 - lots 1, 2, 3, 4, 5, 6, 7, 8, 9, 10, 11, 12, 13, 14, 15, 16, 17, 18, 19, 20, 21, 22, 23, 24, 25, 26, 27, 28, 29, 30, 31, 32, 33, 34, 35, 36, 37, 38, 39, 40, 41, 42, 43, 44, 45, 46, 47, 48, 49, 50

C Garage

Mona Cabera

281-858-6420

softball on tennis courts

mitted in this section.

SITE LAYOUT

Fencing • The Woods of Gleannloch Farms (revised)

The developer shall be responsible for installing perimeter fencing including wood posts, rails and pickets, stone columns and iron fencing in all landscape reserves (except along golf course), and at the rear and sides of the following lots.

Block 1 - lots 1, 2, 3, 4 5, 6, 7

Block 3 - lots 1, 2, 3, 4, 5, 6, 7, 8, 9, 10, 11, 12, 13

The builder shall be responsible for installing a 6' perimeter wood fence, with the good side facing the residence on the following lots:

Block 2 - lots 4, 5, 6, 7, 8, 9, 10, 11, 12, 33, 34, 35, 36, 37, 38, 39

The builder shall be responsible for installing a 6' perimeter wood fence, with the good side facing out on the following lots.

Block 1 - lots 32 (side only), 33 (side only), 42 (side only)

Block 3 - lots 22 (side only), 23 (side only), 47 (side only)

Block 4 - lots 1 (side only), 8 (side only), 9 (side only), 15 (side only)



The builder shall be responsible for installing a 48" high iron fence at the rear of the following lots:

Block 2 - lots 44, 45, 46, 47

All other interior, rear and side fencing shall be the responsibility of the builder. Wood fences in interior lots shall be constructed using alternating panels as illustrated.

LANDSCAPE

Minimum Residential Landscaping Requirements •
Lots 70' - 75' Wide

TREES

Three machine dug and two thirty gallon (30 gal.) container grown trees selected from the plant material list (preferred specimen trees) in the Landscape section of the Gleanloch Farms Residential Guidelines are required on lots 70' - 75' wide. It is recommended that at least one of the required trees be a loblolly pine or oak tree. The required trees must be a minimum of 4" caliper. When lots front and side on two streets, there shall be an additional three trees for side yard. Lots adjoining golf course, lakes or open spaces require two additional trees in rear or side yard. Pine trees are preferred, but other large trees of equal size from the approved plant list, may be considered for variances by the ARC.

SHRUBS

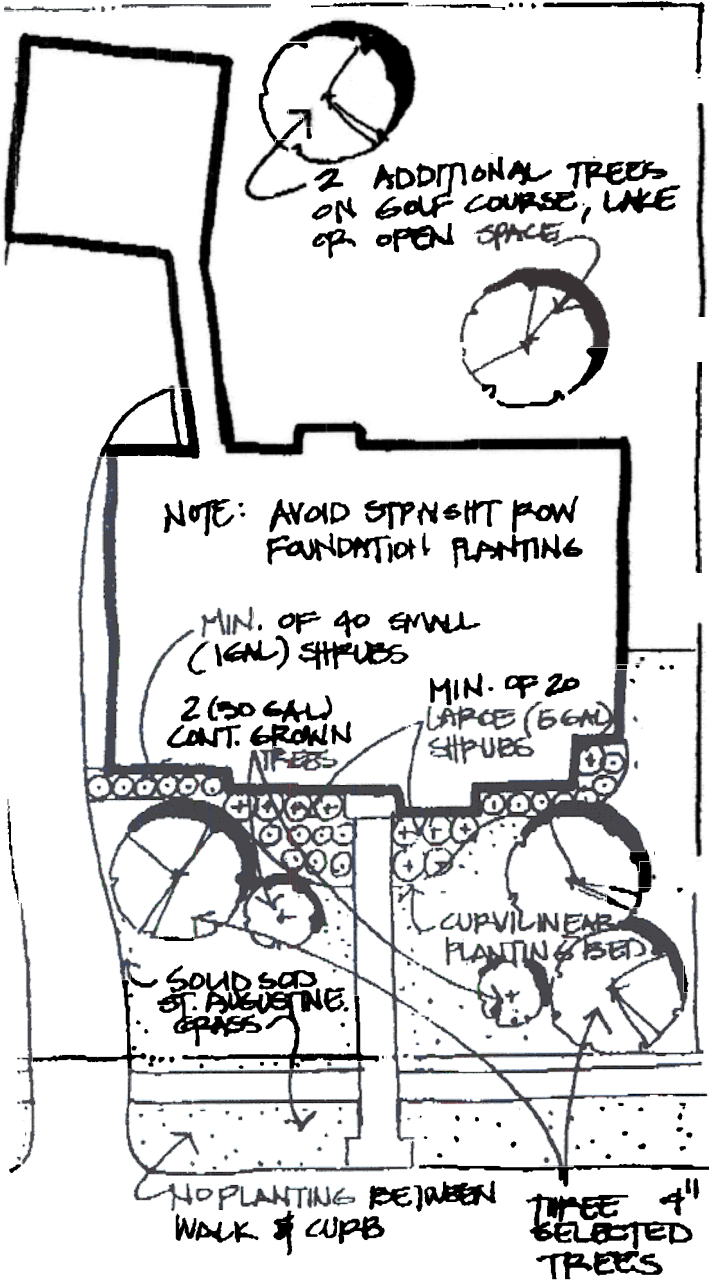
Lots 70'-75' wide require the planting of a minimum of 40 small one gallon shrubs and 20 large five gallon shrubs.

Planting beds are to be curvilinear with the shrubs massed in tiers - smaller shrubs in the front of the bed. Groupings of shrubs of the same species provide a substantial look. A single row of foundation planting is not acceptable. Radius beds 10' minimum from building and vary widths of beds. Mulch all beds with 2" shredded pine bark.

No gravel or rock of any size or color is permitted for use or substitution for shrubs, ground cover, mulch or grass lawns. Specimen boulders and stone borders are permitted.

All grass visible from the street is to be St. Augustine, (solid sod).

Plants used as minimum requirements shall be selected from the approved plant list.



LANDSCAPE

Minimum Residential Landscaping requirements •
Lots 80' Wide & Over

TREES

Three machine dug and two thirty gallon (30 gal.) container grown trees selected from the plant material list (preferred specimen trees) in the Landscape section of the Gleannloch Farms Residential Design Guidelines are required on lots 80' wide and over. It is recommended that at least one of the required trees be a loblolly pine or oak tree. The required trees must be a minimum of 4" caliper. When lots front and side on two streets, there shall be an additional three trees for side yard. Lots adjoining golf course, lakes or open spaces require three additional trees in rear or side yard. Pine trees are preferred, but other large trees of equal size from the approved plant list, may be considered for variances by the ARC.

SHRUBS

Lots 80' wide and over require the planting of a minimum of 60 small one gallon shrubs and 30 large five gallon shrubs.

Planting beds are to be curvilinear with the shrubs massed in tiers - smaller shrubs in the front of the bed. Groupings of shrubs of the same species provide a substantial look. A single row of foundation planting is not acceptable. Radius beds 10' minimum from building and vary widths of beds. Mulch all beds with 2" shredded pine bark.

No gravel or rock of any size or color is permitted for use or substitution for shrubs, ground cover, mulch or grass lawns. Specimen boulders and stone borders are permitted.

All grass visible from the street is to be St. Augustine, (solid sod).

Plants used as minimum requirements shall be selected from the approved plant list.

